



SHURIKEN

PILOT'S GUIDE ►

**MANUEL DE PILOTAGE
PILOTENHANDBUCH
MANUAL DEL PILOTO
パイロット・ガイド
新手指南**

Introduction

Welcome to Variax® Shuriken! This exciting guitar was developed in tandem with Steve “Stevic” MacKay of Twelve Foot Ninja, a fusion metal band from Melbourne, Australia. Steve is the band’s founder, guitarist and producer and is a creative powerhouse who uses the Variax guitar’s capabilities to the maximum. The band’s songs often switch between different musical styles, sounds and even tunings to create a highly addictive soundscape like no other. If you ever wondered how the band’s guitarists manage to change from a single coil “funk” tone in standard tuning to a super-heavy humbucker in Drop A tuning right on the downbeat leading from the verse to the chorus, look no further than the Variax guitar. This guide will introduce you to basic capabilities of the Variax guitar and its custom tones designed by Steve MacKay.

Twelve Foot Ninja’s website can be found here: <http://twelvefootninja.com>.

Variax Shuriken includes these accessories: 1 gig bag, 1 Lithium Ion Battery, Charger, VDI USB Interface, Bridge Saddle Wrench, Truss Rod Wrench

Weight: 7.5 lbs / 3.4 kg

Dimensions: 42” x 13.5” x 2” / 1070 mm x 345 mm x 50 mm

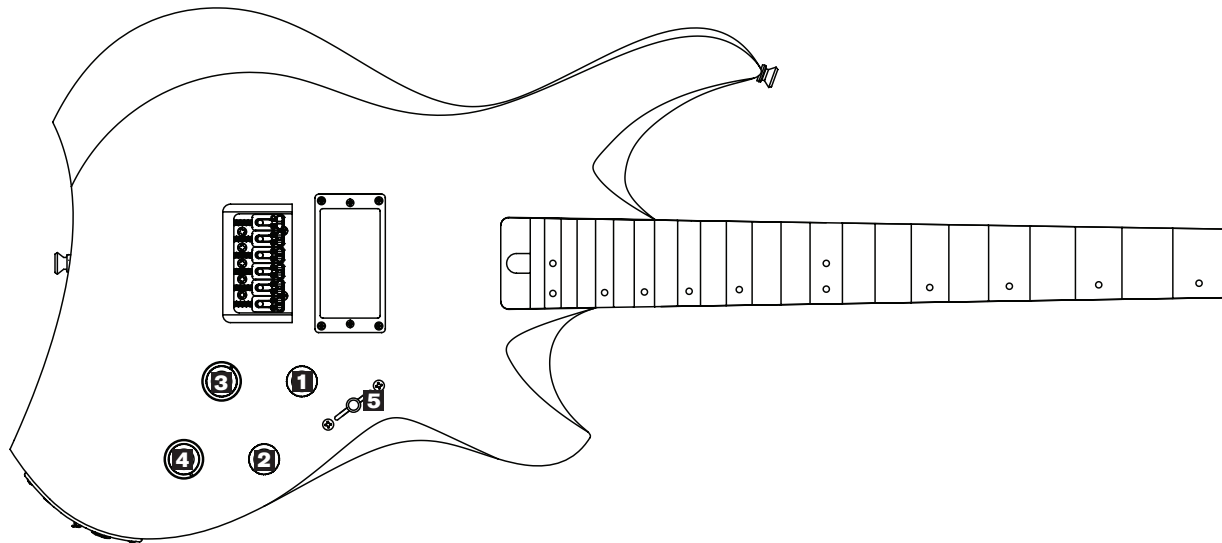
Specifications:

- Alder body and 27” scale maple neck with Rosewood fretboard
- 24 medium-jumbo frets
- Sealed locking tuners
- Fixed custom bridge with piezo saddles (for Variax processing)
- Single medium-output humbucker
- Volume, Tone, Model and Alt Tuning controls
- 5 way selector switch (for Variax model switching)
- ¼” and VDI (Variax Digital Interface) outputs
- Lithium-ion battery with up to 12 hours of play time

Please Note:

© 2016 Line 6, Inc. Line 6, Variax and POD are trademarks of Line 6, Inc. registered in the U.S. and other countries. The Line 6 Logo, Helix, Workbench and Monkey are trademarks of Line 6, Inc. All rights reserved. Shuriken is a trademark of Shuriken Guitars Pty Ltd., used under license. All other product names, trademarks, and artist names are the property of their respective owners, which are in no way associated or affiliated with Line 6. Product names, images, and artist names are used solely to identify the products whose tones and sounds were studied during Line 6’s sound model development. The use of these product names, trademarks, images, and artist names does not imply any cooperation or endorsement. U.S. Patent Nos. 6,787,690; 7,279,631; and 7,812,243. UK Patent No. GB2406957. Japan Patent No. 5227493. German Patent No. 103 92 940.

Basic Operation



1. **Volume** - Adjusts the signal level output of your guitar.
2. **Tone** - Adjusts the amount of high frequency pass through.
3. **Guitar Model Selector** - Push in this knob (LED is lit) to access any of the 8 preset Variax guitar model banks or one of four user definable model banks. When in Variax mode the Guitar Model Selector LED will illuminate the active guitar model bank. There are actually 5 models per bank, as defined by the Selector Switch position. Press this knob again (LED is not lit) to use the magnetic pickups. The four User I, II, III, and IV preset slots allow any combination of guitar

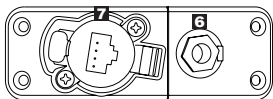
model and alt tuning to be saved directly from the guitar. Please use the Line 6 Workbench software, available as a free download from line6.com/software, for creation of custom models.

4. **Alternate Tuning** - When in Variax mode you can use the **Alternate Tuning Knob** to instantly access 10 preloaded alternate tunings on the fly. Missing your favorite tuning? No problem, you can store your own custom tunings here as well. More on that later. Be sure you amplify your signal enough to drown out the natural acoustics of your guitar or you might hear some odd modulations from it blending with the amplified sound.

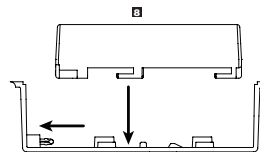
When set to **MODEL** your guitar tuning is determined by the current guitar model and **Selector Switch** position. You can assign alternate tunings to any guitar in the **Guitar Model Selector** banks using our **Variax Workbench** software.

To bypass the Alternate Tuning feature, simply set the **Alternate Tuning Knob** to **STANDARD**. In Standard mode, every Variax model will play in standard tuning, including any alt-tuned models that were saved to a user preset slot.

- 5. **Pickup Selector Switch** - Since there is only one magnetic pickup installed on the guitar, the pickup selector switch has no influence over the sound from the pickup. In Variax mode this switch has unique properties for each model. Check out **The Guitars of Variax** section for details.



- 6. **Analog Output** - Plug in a standard 1/4 inch guitar cable here.
- 7. **VDI Digital Output** - For connecting to Line 6 hardware supporting Variax Digital Interface (VDI). Only connect a Line 6 Variax Digital cable to this output.



- 8. **Battery Compartment** - Installation as shown. Please fully charge the included lithium ion battery in its charger prior to your first use. A fully charged battery will give you a minimum of 12 hours of life. Press the Battery Check button for a quick reference of remaining battery life:

- 4 LEDs=9+ hours
- 3 LEDs=6+ hours
- 2 LEDs=3+ hours
- 1 LED=less than 3 hours
- 1 LED blinking=less than 1 hour, recharge battery

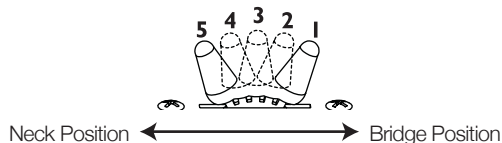
Note: you can also supply power to your Variax guitar without a battery. When connected to VDI Digital Input equipped hardware, such as a HELIX™ or POD® HD500X, power is supplied via this connection.

The Guitars Of Variax

Each Variax model bank has five different models available—one at each position of the Pickup Selector Switch. These five models may all be based on the same guitar, two or three similar guitars, or, each model may be based on an entirely different instrument. You'll find more information about each model below. For electric models, the **Volume** and **Tone** controls work like the ones found on the instruments we modeled. Rolling off the volume, for instance, will typically result in a slightly darker sound. The output level of each model is based on the modeled instrument. Models with humbucking pickups, for example, will tend to be louder than those with single-coils. For acoustic models, the **Volume** control acts as a simple level control. Since acoustic guitars don't have tone controls, we decided to let you shape the tone of these models by changing the position of a modeled microphone using the **Tone** knob. Give it a spin to explore a varying range of tonal flavor for each model.

Pickup Position Numbering

We've numbered the **Pickup Selector** positions in the manual starting with "bridge" (the position toward the bridge) as 1. Moving the pickup selector from there, you go through positions 2, 3 and 4 on your way to the "neck" position (the position toward the neck) which we label as number 5.



User I – IV

In the words of Steve MacKay, founder, guitarist and producer of Twelve Foot Ninja:

These banks contain models I frequently use in Twelve Foot Ninja. Each bank offers a selection of presets that I may use in different parts of the same song. You will notice that there are a lot of identical guitars set to different tunings; this is because I often switch tunings without changing the guitar, amp or effect settings. This secret weapon enables me to change the tuning of the guitar to make playing the riffs easier. Some might read that and say, "That's cheating!" My response would be: Is it cheating to use a fork instead of your hands when you eat spaghetti? Is it cheating to use spell check instead of a dictionary? Of course it isn't! Make no mistake my friends, you still need to be able to nail it - it's just now you have some new tools.

The Variax guitar offers a revolutionary way to tackle previously non-compromising issues like how to go ballistic on stage whilst maintaining accuracy. The answer is to bend the guitar to your will and imagination and not be bound by the inflexibility of traditional guitars.

You may notice that I don't really mess with crazy pickup combinations too often. In complexity, I like to keep things simple. I pretty much use 3 guitar sounds: heavy, clean and acoustic and each category may have a few varied configurations. For example, the guitar for the chorus of our song, 'Invincible' uses a Dave Grohl-esque model tuned to E, B, E, B, E with 3 different volume settings on each string to bring out the colours of the OPEN chords I wanted to emphasize - that is some serious wizard, Jedi stuff to be able to do! Knock yourselves out.

I usually keep the guitar physically tuned to Drop D (D,A,D,G,B,E) because I prefer how it sounds with the modelled tuning. If you want to replicate my setup you will have to tune the low E string down to D, which will make my custom tunings sound correctly in the **USER** and **SHURIKEN** banks. None of the other banks contain tuning offsets and assume that the guitar is tuned to standard E. If you want to load my presets with their respective custom tunings, make sure to set the **Alternate Tuning Knob** to the **MODEL**

position. If all that is a bit too much ninja for you, feel free to keep the guitar in standard E and set the **Alternate Tuning Knob** to **STANDARD** or any of the other tuning presets.

Lastly, why on earth did I call the first four banks **User I** through **User IV**? Because it's up to YOU to go in, get creative, design your own presets and realize a newfound musical freedom that would not be possible without the Variax guitar. Go ahead and become best mates with the Workbench HD app – you will not regret it!

USER I

All custom tunings saved with these presets require the low E string tuned down a whole step to D, and that the **Alternate Tuning Knob** is set to **MODEL**.

Position 1: Post Mortem Spank

Spank guitar body with Spank pickups and drop D tuning (sounds D A D G B E) – Note that the two lowest strings are muted.

Position 2: 8 Collateral

Neutral body with JTV89 pickups and very special custom tuning (sounds D A A A A A) – Note that low E and A strings are tuned down one octave.

Position 3: 7 Collateral

Neutral body with Lester pickups and another very special custom tuning (sounds A E E E E E) – Note that the physical “A” string (tuned to E) is muted.

Position 4: Collateral Aco

Acoustic J body with DADGAD tuning (sounds D A D G A D).

Position 5: Collateral Spank

Spank body with Spank pickups and DADGAD tuning (sounds D A D G A D).

USER II

All custom tunings saved with these presets require the low E string tuned down a whole step to D, and that the **Alternate Tuning Knob** is set to **MODEL**.

Position 1: Octave Standard

Neutral body with JTV89 pickups and standard tuning down one octave (sounds E A D G B E).

Position 2: B Standard

Neutral body with Lester pickups and everything tuned down a fourth (sounds B E A D F# B).

Position 3: Standard

Neutral body with Lester pickups and standard tuning (sounds E A D G B E).

Position 4: Acoustic Standard

Acoustic D body with standard tuning (sounds E A D G B E).

Position 5: Spank Standard

Spank body with Spank pickups and standard tuning (sounds E A D G B E).

USER III

All custom tunings saved with these presets require the low E string tuned down a whole step to D, and that the **Alternate Tuning Knob** is set to **MODEL**.

Position 1: Tumbi

Lester's Banjo with a custom tuning (sounds D A D G B A). Note that all strings except the high A are muted.

Position 2: 7 Sick Riff

Neutral body with Lester pickups and a custom tuning (sounds A E A E F# B).

Position 3: Invincible Aco

Acoustic D body with a drop D tuning (sounds D A D G B E). Note that the two lowest strings are muted.

Position 4: Invincible Chorus

Special Bird body with Lester pickups and a custom tuning (sounds E B E B B E) – Note that the “D”, “G”, and “B” strings are set to 20% of normal volume, high E string set to 90% of normal volume.

Position 5: Invincible G

Neutral body with JTV89 pickups and a custom tuning (sounds G D F# A A A).

USER IV

All custom tunings saved with these presets require the low E string tuned down a whole step to D, and that the **Alternate Tuning Knob** is set to **MODEL**.

Position 1: Acoustic DADGAD

Acoustic D body with a DADGAD tuning (sounds D A D G A D).

Position 2: Acoustic Drop D

Acoustic D body with a drop D tuning (sounds D A D G B E).

Position 3: Drop D Octave

Neutral body with JTV 89 pickups and a drop D tuning one octave lower (sounds D A D G B E) – Note that all strings except the lowest “D” string are tuned down one octave.

Position 4: Drop A

Neutral body with Lester pickups and a drop A tuning (sounds A E A D F# B).

Position 5: Drop D

Neutral body with Lester pickups and a drop D tuning (sounds D A D G B E).

SHURIKEN

In the words of Steve MacKay, founder, guitarist and producer of Twelve Foot Ninja:

All of the models included in the Shuriken bank are my go-to tunings and models. There are guitars in standard tuning, 7 string standard tuning, 8 string standard tuning, acoustic standard and DADGAD tuning. Just to get everyone started, ninjafied and ready to question why you never used this guitar earlier! As with the User banks above, the custom tunings only work correctly if the low E string is tuned down to D and that the Alternate Tuning Knob is set to MODEL.

Please note that if you want to load preset tones with their saved custom tuning, make sure to set the **Alternate Tuning Knob** to the **MODEL** position.

Position 1: Drop D Octave

Neutral guitar body combined with JTV 89 pickups and everything tuned down one octave (sounds E A D G B E).

Position 2: Tone Down Acoustic

Acoustic D body with a custom tuning (sounds C G C F A D).

Position 3: Drop A

Neutral guitar body with Lester pickups and everything tuned down a fourth (sounds A E A D F# B).

Position 4: Shuriken Spank

Spank guitar body with Spank pickups and drop D tuning (sounds D A D G B E) – Note that the two lowest strings are muted, and the D string is set to only 4% of normal volume.

Position 5: Shuriken

Spank guitar body with Spank pickups and a special custom tuning (sounds B F# B C# B C#).

T-MODEL



Based on* 1960 Fender® Telecaster® Custom

Leo Fender's Telecaster, originally known as the Broadcaster, was the first commercially successful solidbody electric guitar and has been in continuous production for over fifty years.

Position 1: Bridge, **Position 2:** Widerange Humbucker Bridge,
Position 3: Bridge + Neck, **Position 4:** Widerange Humbucker Neck,
Position 5: Neck

SPANK



Based on* 1959 Fender® Stratocaster®

The varaceous Stratocaster is further evidence of the genius of Leo Fender. Considered a radical departure at its introduction in 1954, the Stratocaster® influenced electric guitar design more than any other single instrument and its distinctive comfort-contoured body, bolt-on neck, and versatile electronics have become industry standard features. Our model takes one slight liberty; unlike the modeled instrument, the tone control works on the Bridge pickup, too. We trust that Leo won't mind.

Position 1: Bridge **Position 2:** Bridge+Middle, **Position 3:** Middle
Position 4: Neck+Middle **Position 5:** Neck

* All product names are trademarks of their respective owners, which are in no way associated or affiliated with Line 6. These product names and descriptions are provided for the sole purpose of identifying the specific products that were studied during Line 6's sound model development. Fender®, Stratocaster®, and Telecaster® are registered trademarks of Fender Musical Instruments Corporation. Gibson, Gibson Firebird, Epiphone and Les Paul are registered trademarks of Gibson Brands, Inc.

LESTER



Based on* 1959 Gibson® Les Paul® Standard, 1955 Gibson® Les Paul® Special and 1976 Gibson Firebird® V

The Les Paul® Standard guitar was Gibson's first solidbody electric design and was a collaboration with popular guitarist and recording pioneer Les Paul. Unlike the easy-to-manufacture Fender designs, the Les Paul retains the carved top and set neck construction of their hollowbody models. The original series was a commercial failure, however, and was discontinued in 1961. The resulting resurgence of popular interest led to its reintroduction in 1968..

The Les Paul® Special was added to the Les Paul line in 1955 as an intermediate step between the utilitarian Junior and more luxurious Standard. The greater tonal options made possible by the second P-90 helped make the Special a favorite of reggae legend Bob Marley. Our model is based on the original single cutaway version.

The Les Paul® Firebird, introduced in 1963, was created with the help of Detroit automobile designer Ray Dietrich. Neck-through construction and Epiphone® style mini-humbuckers gave the Firebird a unique combination of good sustain and a biting, trebly sound—characteristics which made it a favorite of blues slide guitar legend Johnny Winter.

Position 1: Les Paul Bridge **Position 2:** Firebird Bridge
Position 3: Firebird Neck **Position 4:** Special P90 Bridge
Position 5: Les Paul Neck

ACOUSTIC



Position 1 based on* 1959 Martin® D-28

The D-28 is generally considered the definitive Martin® flat-top. The Dreadnought (or “D”) body combined with rosewood back and sides produces a full sound ideal for flatpicking.



Position 2 based on* 1970 Martin® D12-28

In 1970, Martin added 6 more strings to the successful D-28 to capitalize on then-current folk music trends.



Position 3 based on* 1967 Martin® O-18

The smaller “parlor” sized body with mahogany back and sides has a balanced tone ideal for fingerstyle playing.



Position 4 based on* 1966 Guild® F212

Guild’s Jumbo-bodied 12-strings offered players the elusive combination of volume and clarity. We’ve modeled the F212 with mahogany back and rims.



Position 5 based on* 1995 Gibson® J-200

Easily identified by its impressive size and ornamentation, the J-200 was often seen played by flashy country and western artists and was a later favorite of Elvis Presley.

* All product names are trademarks of their respective owners, which are in no way associated or affiliated with Line 6. These product names and descriptions are provided for the sole purpose of identifying the specific products that were studied during Line 6’s sound model development. Martin® is a registered trademark of Dreadnought, Inc. Guild® is a registered trademark of Cordoba Music Group, Inc. Gibson®, ES®, and Epiphone® are registered trademarks of Gibson Brands, Inc.

Jazz



Based on* 1961 Gibson® ES®-335, 1964 Epiphone® Casino, 1954 Gibson® ES®-175 and 1953 Gibson® Super 400

The Semi-hollow Gibson was conceived as a blend of the tone and sustain of a solidbody with the balance and aesthetics of a hollowbody. The “woody” tone of these guitars made them popular with Jazz artists like Larry Carlton and Blues greats like B. B. and Albert King. Our model is based on a 1961 dot neck, with P.A.F.’s and a stop tailpiece.

Gibson acquired former rival Epiphone in 1957 and began producing Epiphone guitars in its Kalamazoo factory. John Lennon was particularly fond of the Casino, and continued to record with it long after the breakup of the Beatles. The Casino features P-90 pickups.

Gibson added a sharp “Venetian” cutaway and a fancier fingerboard to the budget ES-125 model to create the ES-175. With the addition of a second P-90 pickup in 1953, this quickly became a popular and enduring choice for jazz guitarists.

By the end of the 1940’s, changing musical styles found premium archtops like the Super 400 to be lacking in volume. By simply adding the pickups and controls developed for its early electric guitars, Gibson created the electric version of the Super 400 in 1951. Our model is based on the version with P-90’s. Check out Scotty Moore (and Elvis) playing a Super 400 in the ‘68 Comeback Special.

Position 1: Jazz Super Four Bridge **Position 2:** Semi Powerface Neck

Position 3: ES335 Neck **Position 4:** Jazz Super Four Neck

Position 5: Jazz Seventy Five Neck

World



Position 1 based on* 1935 Dobro® Model 32

Though the Dobro is generally a wood-body instrument, this model is based on an unusual specimen with an all-aluminum body that emphasizes midrange.



Position 2 inspired by* the Coral Sitar

The Coral Sitar offered guitarists the ability to get the buzz and drone of a sitar without having to learn a new instrument. On this model, the tone control changes the level of the drone strings.



Position 3 based on* 1999 Jerry Jones Shorthorn®

In the 60’s Danelectro managed to make great sounding guitars from Masonite and lipstick tubes. In the 90’s, Jerry Jones continued that tradition with the same materials as their 60’s counterparts. Our model is with the bridge and neck pickups active.

* All product names are trademarks of their respective owners, which are in no way associated or affiliated with Line 6. These product names and descriptions are provided for the sole purpose of identifying the specific products that were studied during Line 6’s sound model development. Dobro® ES® and Gibson® are registered trademarks of Gibson Brands, Inc. Shorthorn is a registered trademark of Jerry Jones Guitars.



Position 4 inspired by* the Gibson® Mastertone Banjo

The Mastertone series was introduced in 1925 and quickly became the definitive Bluegrass banjo.



Position 5 based on* 1928 National® Tricone.

The Tricone uses three 6-inch cones mechanically coupled to the bridge to amplify string vibrations. The Tricone has a smoother sound than later, single-cone resonators.

TWANG



Based on* 1959 Gretsch® 6120 and 1966 Rickenbacker® 370

The 6120 was the first of several models that Gretsch developed with country guitar whiz Chet Atkins. The 6120 is usually associated with the “twangy” sounds of players like Duane Eddy, Eddie Cochran, and Brian Setzer. Our model is equipped with Filter’tron hum-canceling pickups.

Though overshadowed by the success of the 12 string, the 6 string versions of Rickenbacker’s stylish models continue to be popular with players looking for something a bit out of the ordinary, like Ed O’Brien of Radiohead.

Position 1: Gretsch Bridge **Position 2:** Gretsch Bridge + Neck

Position 3: Gretsch Neck **Position 4:** Rickenbacker Bridge

Position 5: Rickenbacker Neck

* All product names are trademarks of their respective owners, which are in no way associated or affiliated with Line 6. These product names and descriptions are provided for the sole purpose of identifying the specific products that were studied during Line 6’s sound model development. National is a registered trademark of KMC Music, Inc. Gretsch® is a registered trademark of Fred W. Gretsch Enterprises, Ltd. Rickenbacker® is a registered trademark of Rickenbacker International Corporation.

Build A Custom Guitar

To really take advantage of the range and versatility of Variax mode, especially when performing, you'll want immediate access to your essential sounds. To get your twenty favorite tones ready for instant recall, use the four user banks on the **Guitar Model Selector** knob. Each of these can store a different set of five of your favorite guitar models as well as tone and alternate tunings (with **Alternate Tuning Knob** set to **MODEL**). You could, for instance, put your favorite electric sounds with standard tuning in **USER I**, the same electric sounds and drop tuning in **USER II**, and acoustic sounds in **USER III**. There are no limits.

Let's say you found a sound that you know you'll be coming back to again and again. Here's what you do to store it in one of the custom banks:

1. Be sure your sound is exactly as you want it. This is going to store the guitar model and tone knob settings.
2. Press and hold the **Guitar Model Selector** knob for 2.5 seconds or until the LED begins to blink to enter customization mode.
3. Now turn the Guitar Model Selector to one of the **USER** positions. It's your choice. The Alternate Tuning LED is no longer lit.

Move the **Pickup Selector Switch** to the desired position where you want to store it.

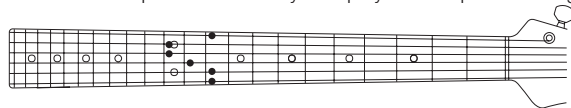
5. To save an alternate tuning to this position, select the desired tuning on your **Alternate Tuning Knob**. Skip this step if you do not want an alternate tuning.
6. Press and hold the **Guitar Model Selector** knob for 2.5 seconds. Presto! You just saved your first guitar model to a custom bank! Don't forget to set your **Alternate Tuning Knob** to **MODEL** if you want to recall the tunings exactly the way you've saved them.

Creating Custom Alternate Tunings

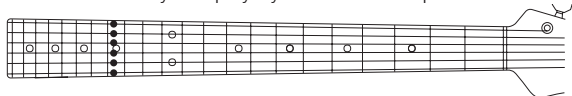
The Alternate Tuning feature of your Variax is a very powerful tool and while we've given you 10 common tunings to choose from on the **Alternate Tuning** knob we know some of you will still wish for even more, such as using this feature to replace your capo. Have no fear, we've got you covered. You can replace all but the **MODEL** and **STANDARD** setting on the **Alternate Tuning** knob with your very own creations. Here is how you do it.

1. Make sure your guitar is tuned to a standard tuning with a 440Hz reference with the **Guitar Model Selector** set to any 6 string guitar model.
2. Press and hold the **Guitar Model Selector** knob for 2.5 seconds or until the LEDs begins to blink to enter customization mode.
3. Select the position you'd like to replace on the **Alternate Tuning** knob. **Note:** If it's already there you need to move the knob away and back so customization mode knows you want to modify a tuning. Only the **Alternate Tuning** LED will now flash.
4. Create new alternate tunings by playing one note at a time on each string you wish to change. Customization mode sees the 12th fret as the 0 fret (or nut). So playing a note at the 10th fret will tune that string down a whole step while playing a note at the 14th fret will tune it up a whole step from standard. Be sure to mute strings carefully as you assign tunings across the neck - any mishaps could reassign the tuning. You can also play all notes at once if you can fret them cleanly.

Here is an example of the notes you'd play for an open D tuning:



Here are the notes you'd play if you wanted a 'capo' on the 3rd fret (G).



5. Momentarily press and release the **Guitar Model Selector** knob to enter audition mode. Try out your tuning. If it sounds right, proceed to step 6. If you need to make an adjustment momentarily press and release the **Guitar Model Selector** and return to step 3, or turn your **Alternate Tuning** knob to abort alternate tuning customization.
6. Press and hold the **Guitar Model Selector** knob for 2.5 seconds or until the **Alternate Tuning** LED stops blinking to save your new tuning.

Factory Reset Options

A factory reset on the Variax Shuriken guitar will not be necessary under most circumstances. If you do have to perform a full firmware reset, you need to know that the Variax Shuriken guitar's model and alternate tuning knobs will not reflect the correct state. In that case, you will need to run Workbench HD software and manually restore factory settings from the Variax Shuriken bundle.

To Reset Firmware Only

Using the supplied Workbench USB interface, connect your Variax guitar to your computer. Please ensure that the Variax battery is charged and inserted, and plug in a 1/4" TRS short patch cable or headphone adapter to engage the battery. Check that both lights are green on the Workbench USB interface throughout the entire process.

Launch Line 6 Monkey software. If you haven't downloaded Line 6 Monkey yet, you can do so free of charge at www.line6.com/software. Within Monkey, select "Flash Memory" for your Variax guitar and click on Install. Monkey will post a dialog asking whether you want to keep existing patches. Clicking Yes, which is highly recommended, will reset the Variax Shuriken guitar's firmware without altering the current model and tuning settings. Clicking No

will restore the guitar to default settings, which will not match the **Guitar Model** and **Alternate Tuning Selector**.

To Reset Guitar Model and Alternate Tuning Selectors:

If you want to restore Variax Shuriken defaults for model and alternate tuning selectors, you can do so via Workbench software. If you have not downloaded Line 6 Workbench HD software yet, you can do so free of charge at www.line6.com/software.

Using the supplied Workbench USB interface, connect your Variax guitar to your computer. Please ensure that the Variax battery is charged and inserted, and plug in a 1/4" TRS short patch cable or headphone adapter to engage the battery. Check that both lights are green on the Workbench USB interface throughout the entire process.

After launching the Workbench application, go to the File menu and click on Open Bundle. Select the Variax Shuriken bundle in the dialog box and click OK. Click on the Upload All button in the upper left hand corner of the Workbench application. Once the upload is complete both of the model and alternate tuning settings will be reset.

To Reset one or all of the Alternate Tuning presets:

You can also reset the alternate tuning presets directly from the guitar. First, set the **Pickup Selector Switch** to its middle position, then press and hold the **Guitar Model Selector** Knob while you plug in a 1/4" cable to power up the guitar. Your **Guitar Model Selector** LED and **Alternate Tuning** LED will both flash red. Switch the **Alternate Tuning** knob/roller to any new position - **Guitar Model Select** knob will no longer be lit. To restore only 1 preset, select the desired tuning on the **Alternate Tuning knob**. Once you've made your selection, press and hold the **Guitar Model Selector knob**. **Guitar Model Selector knob** will flash red, rapidly 3 times, indicating all 10 Alternate Tunings or 1 selected Alternate Tuning are now restored to factory settings. The guitar will now return to normal operation. Here are the factory default alternate tunings loaded in your Variax guitar:

Here are the factory default alternate tunings loaded into the Variax Shuriken guitar:

Variax Standard Factory Alternate Tunings	
Name	Tuning Description (from low to high string)
STANDARD	E A D G B E
USER I	D A D G A D
USER II	E B E B B E
USER III	E A A A A A
USER IV	B E E E E E
1 DOWN	D G C F A D
2 DOWN	C F B \flat E \flat G C
DROP C	C G C F A D
BARITONE	B E A D F \sharp A D
DROP A	A E A D G B
OCTAVE	E A D G B E

